

# CCE FINLAND SCHOOL DEVELOPMENT PROGRAM

A unique Finnish Education Implementation  
Model powered by CCE Finland



**SISU BOX**  
Finnish Preschool in a Box





## INDEX

- About us
- What is the School Development Program (SDP)?
- Key Highlights of School Development
- School Development Program at a Glance
- Phase Development Framework
- Exploring the Phase Development
- Real - Time Implementations in CCE Schools -  
Case Studies:
  - SEL - Student Engagement
  - SEL - Managing Daily Lives
  - PBL - Designing of Modern Learning Spaces
  - ECE - Developing Play-based Stations
- CCE Finland Schools
- FAQs
- Continuing the Joy of Learning

# ABOUT US



Welcome to the world of the Council for Creative Education (CCE) Finland, a global organization rooted in the heart of Tampere, Finland. At CCE Finland, we believe in redefining education through creativity. Our mission is to inspire and empower educators and institutions worldwide to embrace creativity as the cornerstone of learning.

At CCE Finland, we offer tailor-made educational solutions for all levels, from pre-primary to higher education, meticulously crafted through extensive research and Finnish academic expertise. Our educational tours and student camps provide a window into the Finnish education system's magical blend of creativity. With a global commitment to educational excellence, we proudly present SISU Schools and Preschools, following the acclaimed Finnish curriculum in South Korea, Vietnam, and India.

Our research-based pedagogical solution, SISU Box, empowers preschool owners and teachers to implement the renowned Finnish preschool curriculum while emphasizing the joy of play-based learning. CCE Finland transcends borders, operating in MEA, Nigeria, the Americas, Australia, and Asia, with a vast network of collaborators, serving customers and educators from over 35 countries worldwide. Join us in transforming education through creativity!



# WHAT IS SCHOOL DEVELOPMENT PROGRAM (SDP)?

CCE Finland's School Development Projects represent a beacon of innovation and transformation in the realm of education. Our core initiatives span creative education, teacher professional development, inclusive education, curriculum enhancement, and school system improvement, to make space for creative pedagogy, ultimately fostering educational excellence.

Our journey begins with the careful selection of schools that resonate with the Finnish education vision. Following this, CCE Finland conducts creativity observation tours, to comprehensively assess the school's ecosystem, encompassing infrastructure, community, learning spaces, classrooms, and teaching methods. This thorough understanding serves as the foundation for tailor-made training programs rooted in Finnish research and expertise. These programs seamlessly integrate Finnish Pedagogy into existing educational frameworks, aligning with national education policies while preserving the quintessence of Finnish education. A particular focus is placed on nurturing transversal competencies, such as critical thinking, cultural competence, ICT skills, and entrepreneurship, all pivotal for comprehensive individual development through effective education.

Aligned with CCE Finland's School Development Program (SDP) and phase development, the transition from old pedagogy, which centred on 'content' with limited technology and skills, to the new pedagogy is at the forefront of our mission. In this shift, we emphasize teacher-student collaboration, harnessing technology to foster essential learning skills. This transformation actively encourages critical thinking, and proficient technology use, and empowers students to become creators of new knowledge - a demand of the modern Educational Era.





## KEY HIGHLIGHTS OF SCHOOL DEVELOPMENT



- **Careful School Selection:** We identify schools aligned with Finnish education vision.
- **Comprehensive Creativity Observations:** Assessing infrastructure, community, learning spaces, classrooms, and teaching methods.
- **Foundation for Tailor-Made Training:** Observations guide tailor-made training programs.
- **Seamless Integration of Finnish Pedagogy:** Incorporating Finnish research and expertise into education.
- **Alignment with National Education Policies:** Our initiatives align with national education policies.
- **Focus on Transversal Competencies:** Fostering critical thinking, cultural competence, ICT skills, and entrepreneurship.



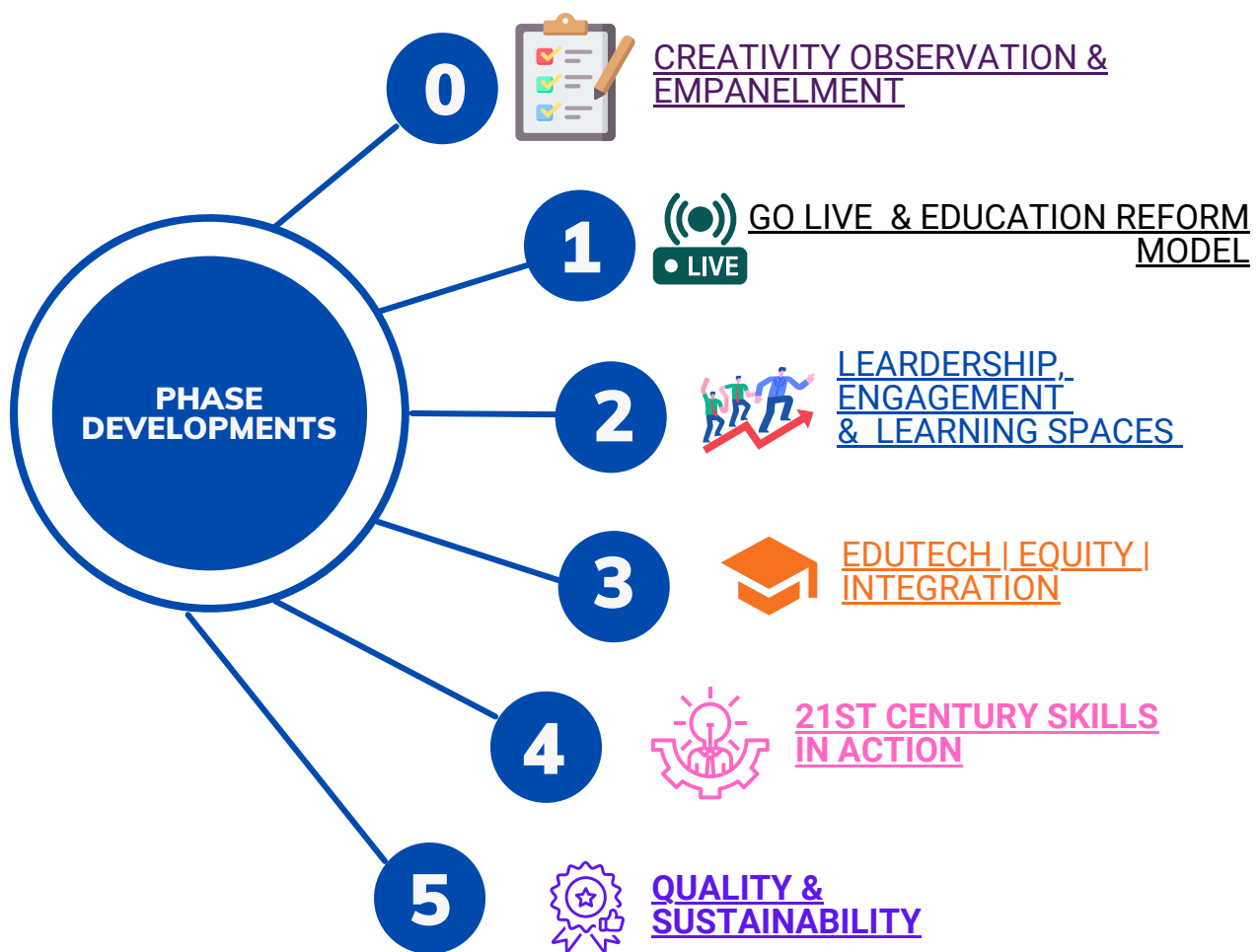
## SCHOOL DEVELOPMENT PROGRAM AT A GLANCE



- **Phase Development Recommendations:** Tailor-made training and development programs based on Finnish expertise and research.
- **Leadership Development:** Empowering school leadership to drive change effectively.
- **Faculty Training and Happiness Unlocking:** Equipping educators with the tools to inspire and engage students.
- **GO LIVE Implementations:** Implementing Finnish Pedagogy in classrooms and curriculum.
- **Parent Workshops:** Engaging parents in the educational journey.
- **Shared Leadership:** Promoting collaborative leadership within the school community.
- **Faculty-Designed Curriculum Framework:** Adapting the curriculum to suit the school's unique needs.
- **Quality Committee and Reform Committee:** Ensuring quality and continuous improvement.
- **Exam Evaluation Challenges:** Addressing examination-related issues creatively.
- **Student Leadership:** Nurturing leadership skills among students.
- **Art of Book Publishing:** Encouraging students to express their creativity.
- **Project-Based Learning:** Fostering problem-solving skills and critical thinking.
- **Phenomenon-Based Learning:** Embracing a holistic approach to learning.
- **21st Century Skills in Action:** Preparing students for the challenges of the modern world.



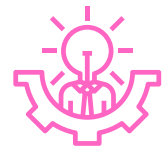
# PHASE DEVELOPMENT FRAMEWORK



**A unique Finnish Education Implementation Model powered by CCE Finland**

## EXPLORING THE PHASE DEVELOPMENT

- Creativity Observations
- Phase Development Recommendations
- Leadership Development
- Faculty Training & Unlock Happiness
- GO LIVE Implementations
- Parent Workshops
- Shared Leadership
  - Faculty-designed Curriculum Framework
  - Quality Comr
  - Reform Committee
  - Exam Evaluation Challenges
  - Self-care to Creativity in Classrooms
- Student Leadership
  - Student Led Meetings
  - Student Led Conference
  - ICIM
  - Student-designed Learning Spaces
- 21st-Century Skills in Action
  - Education reform model schools
  - SISU Learning Spaces (Globally)
  - Project Based Learning
  - Phenomenon Based Learning
  - Game-Based learning
  - Art of Book Publishing





# REAL-TIME IMPLEMENTATIONS IN CCE SCHOOLS SOCIAL EMOTIONAL LEARNING



Case Study: Transforming Student Engagement with STT - Student Teacher Time



In a modern world teeming with digital distractions, sustaining student engagement has become a paramount concern for educators. This part of phase development delves into the transformative potential of a unique educational concept: Student Teacher Time (STT), within the broader framework of Social and Emotional Learning (SEL). It seeks to address the growing need for effective strategies to maintain students' focus and motivation in an era of pervasive technological diversions.

This research, featured in the esteemed International Journal of Applied Science and Engineering (IJASE), Volume 11, Issue 01, June 2023, illuminates the pivotal role of STT as a tool that not only motivates students but also empowers them to take charge of their learning journey. Amid the constant barrage of distractions from smartphones, social media, and other technologies, STT emerges as a promising solution to maintain students' motivation and keep them actively engaged in the educational process. This case study aligns with the global emphasis on Social and Emotional Learning (SEL), recognized for its ability to foster empathy, respect, and solidarity, thus contributing to the creation of a more equitable and sustainable world.

This research was published and conducted under the collaborative umbrella of the Council of Creative Education Finland (CCE Finland). It is a testament to how innovative pedagogical tools, such as STT, can unlock the doors to enhanced student engagement, ultimately shaping the trajectory of education in an age defined by digital diversions. The publication DOI: 10.30954/2322-0465.1.2023.5 in the International Journal of Applied Science and Engineering marks a significant step in the dissemination of CCE Finland's School Development Program that holds the potential to redefine the future of education and elevate student engagement.

# REAL-TIME IMPLEMENTATIONS IN CCE SCHOOLS

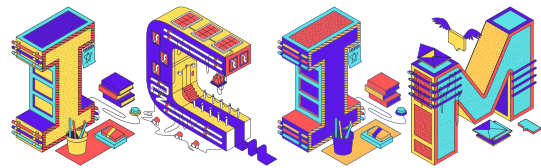
## SOCIAL EMOTIONAL LEARNING



### Case Study: Cultivating Transversal Competency - Managing Daily Lives

CCE Finland's 'Independent Country - Independent Me' (ICIM) initiative is a multifaceted effort aimed at cultivating essential life skills, attitudes, and values among individuals and students, enabling them to effectively manage their daily lives and emotions.

This comprehensive approach draws inspiration from Finnish Transversal Competence and India's New Education Policy, with an added layer of celebrating each country's independence.



At its core, ICIM emphasizes personal grooming, etiquette, household chores, and social responsibility, all with the overarching goal of fostering independence in individuals' daily lives. CCE Finland's schools have wholeheartedly embraced this transformative endeavor by actively engaging students from grades K-12.

This visionary project has transcended its initial stages to become a formidable movement, with teachers and parents collaboratively designing and encouraging a series of tasks aimed at instilling independence across age groups.



# REAL-TIME IMPLEMENTATIONS IN CCE SCHOOLS PROJECT BASED LEARNING

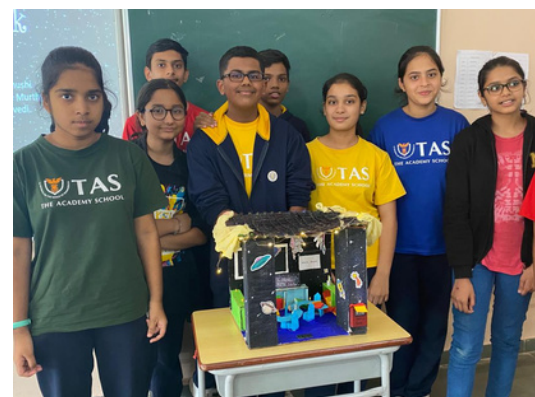


Case Study: Designing of Modern Learning Spaces



Each PBL begins with a fundamental question. This inquiry initiated a comprehensive PBL endeavor involving 11th-grade students. "How can we create conducive communication spaces that enhance the learning environment and promote well-being?" The project encompassed subjects like Math, Economics, Architecture, Interior Designing, and Mental Health and Wellness, offering a holistic educational experience.

Throughout the project, students embarked on an insightful and profound journey of inquiry, delving into the intricate relationship between physical spaces and mental well-being. They actively engaged with experts in fields such as architecture and design, garnering valuable knowledge and collaborating effectively in teams.



A notable feature of this initiative was its focus on communication and collaboration, which brought together students, educators, and parents to create an optimal learning environment.

The project's milestones included designing innovative communication spaces, each serving as a unique channel for student engagement and well-being.

This case study underscores the transformative potential of PBL and PhBL in fostering students' academic growth, personal development, and overall well-being. It highlights the power of these methodologies to inspire proactive, creative, and confident learners who are well-prepared to tackle the challenges of the modern world. The collaborative nature of this educational approach, with active involvement from parents, exemplifies the vision of nurturing independent, lifelong learners.

# REAL-TIME IMPLEMENTATIONS IN CCE SCHOOLS DEVELOPING PLAY BASED LEARNING STATIONS



Case Study: Transforming Early Childhood Education with Finnish Pedagogy



In our relentless pursuit of redefining education through creativity, CCE Finland proudly presents a compelling case study, spotlighting our transformative journey in Early Childhood Education (ECE). Rooted in Finnish Pedagogy, our journey commences with a strategic focus on the early years, introducing innovative approaches like Theme Integration, Spiral Learning, and Phenomenon-Based Learning via learning stations.

Central to this transformation is the utilization of the SISU Box, a groundbreaking resource designed by CCE Finland's research team and bestowed with the prestigious Design From Finland award. The SISU Box, essentially a Finnish preschool encapsulated in a box, empowers children to foster their creativity, curiosity, and self-expression while developing essential skills in mathematics and linguistics.

It also cultivates key transversal competencies that lay the foundation for their future academic success. It's essential to recognize that the creation of these high-quality educational spaces, inspired by the play-based methodology, isn't a matter of standardized replication but emerges through a dynamic process of teacher training, unlearning, reflection, coursework, and teacher development.

This implementation exemplifies the harmonious fusion of Finnish Pedagogy and innovative learning spaces, creating an environment where both students and teachers thrive.





## CCE FINLAND SCHOOLS



With schools, located in Vietnam, India, and South Korea, have embarked on an educational transformation journey with the Council of Creative Education Finland (CCE Finland). These institutions are committed to revolutionizing classroom education and prioritizing interactive and engaging learning experiences. Their collective goal is to provide a holistic and world-class education that equips students with academic knowledge while fostering essential life skills. By collaborating with CCE Finland, these schools are driving a cultural shift in education, drawing inspiration from the acclaimed Finnish education model. They aspire to create immersive learning environments that cater to each child's unique aptitude while promoting experiential and sustainable education, aligning with the evolving needs of future generations. This collaboration signifies a significant step toward delivering a promise of excellence in education, echoing the success stories of renowned Finnish schools worldwide.





## SCHOOL DEVELOPMENT FAQs

**How do I apply for SDP for my School/Institute?**

For schools aspiring for holistic development, our Finnish School Development Program, structured in stages, ensures a comprehensive transformation. You can register your school through the provided School Registration Form. Upon receiving your details, we will tailor a financial proposal that aligns with your unique needs and aspirations.

**What is SDP Framework and Phase Developments?**

SDP Framework is an overall outline of how schools progress in bringing world-famous Finnish Pedagogy and creativity into their education systems.

Phase development ensures a smooth creative study of your current school infrastructure, vision, mission, and local education reforms and provides a smooth transition and platform.

**Do I have to start from Phase 0?**

Phase 0 is essential to ensure School's vision matches Finnish Education. Post the shortlisting of schools and signing of schools/institutions - CCE Finland's team consisting of experts and researchers conducts a creativity observation tour. In the case of Green Field (new School - CCE Team starts as early as Pre-Feasibility Study)

**Why focus on Teacher Training & Leadership?**

Within the overall sphere of school leadership, teacher leadership has more significant effects on student achievement than principal leadership. Therefore, it's essential to work on teacher training and leadership to bring about substantial and much-needed 21st-century transformation in classrooms.

**Can I choose which Phase my school should start with?**



**ACREDITATION PROCESS**

At CCE Finland, we highly recommend engaging in our comprehensive School Development program to fully embrace the Finnish education system and lifelong learning in your institution. However, we understand that you might want to start with a more focused approach. In addition to our School Development program, we also offer the option of applying for our Accreditation process. This process allows you to assess and benchmark the level of creativity and innovation in your pedagogy, providing valuable insights into your educational practices. If you're interested in this option or would like more information, please feel free to reach out to us at [info@ccefinland.org](mailto:info@ccefinland.org). We're here to support your journey towards fostering creativity and excellence in education.

## CONTINUING THE JOY OF LEARNING

At CCE Finland - School Development Program is a strategic partnership - A promise to walk with its schools - all the way from Training and Development of Teachers, Coaching for Leadership, Planning Admission Strategies, Parent Engagement Workshops, and Finnish ECE LIVE Implementations Cycle to name a few. In addition, CCE Team strives to see its research and programs in real-time implementations.

In Finland, in the early year's phase, there is a strong emphasis on learning through play before the children enter schooling. The Finnish curriculum strongly believes in letting children be children by focusing on sports, health, and overall well-being. All activities are planned around the child's holistic well-being, supporting their development and learning journey. Learning is personalized for each student by empowering their strengths and supporting their challenges. Each student's progress is followed through the national curriculum's learning outcomes.

Courses or workshops are just meant to activate the leadership and educator. The long-term aim is to provide that space to bring out their creativity in daily learning, enhancing students' learning joy. Our phase developments have witnessed real-time implementations in their child's life. It's therapeutic to know that our programs are actually making a difference and that we are genuinely nurturing 21st Century Skills in real time.

CCE Finland's SDP ensures Exploring ways to integrate business principles in educational reform and developing knowledge societies with principles that preserve and enhance a strong and inclusive social state.

If you wish to be a Finnish school – please visit [www.ccefinland.org](http://www.ccefinland.org) or write to us at [info@ccefinland.org](mailto:info@ccefinland.org)





# Contact Us



**Head Office - CCE Finland Oy**  
**Platform 6, Akerlundinkatu 8, 33100 Tampere, FINLAND**  
**info@ccefinland.org - www.ccefinland.org**



**USA**  
**usa@ccefinland.org**



**Australia**  
**australia@ccefinland.org**



**Saudi Arabia**  
**saudi@ccefinland.org**



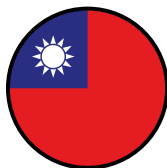
**Indonesia**  
**indonesia@ccefinland.org**



**Egypt**  
**egypt@ccefinland.org**



**India**  
**info@ccefinland.org**



**Taiwan**  
**info@ccefinland.org**



**Bahrain**  
**bahrain@ccefinland.org**



**Nigeria**  
**nigeria@ccefinland.org**



**UK**  
**uk@ccefinland.org**